

FLUTE

Very crisp ($\text{♩} = 84$)

Measures 47-52 of a musical score for Flute. The key signature is one sharp (F#). The time signature is 3/2. The music is marked *ff* (fortissimo). The notation includes eighth and sixteenth notes, many with accents. Red brackets highlight the first measure of measure 47 and the final measure of measure 52.

$\text{♩} = 70$

Slowly and solemnly

Measures 9-17 of a musical score for Flute. The key signature is two flats (Bb, Eb). The tempo is marked *Slowly and solemnly*. The music is marked *p* (piano) at the beginning and end of the first line, and *f* (forte), *p* (piano), and *pp* (pianissimo) at the end of the second line. The notation includes quarter, eighth, and sixteenth notes, many with slurs. Red brackets highlight the first measure of measure 9 and the final measure of measure 17.

OBOE

Very crisp ($\text{♩} = 84$)

Measures 6-12 of the Oboe part. The key signature is one sharp (F#). The time signature is 2/2. Measure 6 starts with a rest, followed by a series of eighth notes. Measure 7 continues the eighth-note pattern. Measure 8 has a red bracket under the first two eighth notes, with a forte (*f*) dynamic marking below. Measure 9 continues the eighth-note pattern. Measure 10 has a red bracket under the first two eighth notes, with a mezzo-piano (*mp*) dynamic marking and a crescendo (*cresc.*) instruction below. Measure 11 continues the eighth-note pattern. Measure 12 has a red bracket under the first two eighth notes, with a forte (*f*) dynamic marking below.

$\text{♩} = 70$

Measures 13-14 of the Oboe part. The key signature is one flat (Bb). The time signature is 2/2. Measure 13 has a red bracket under the first two eighth notes, with a Solo marking and a piano (*p*) dynamic marking below. Measure 14 continues the eighth-note pattern.

Measures 15-17 of the Oboe part. The key signature is one flat (Bb). The time signature is 2/2. Measure 15 starts with a circled measure number 17. The measure contains a series of eighth notes. Measure 16 continues the eighth-note pattern. Measure 17 has a red bracket under the first two eighth notes, with a piano (*p*) dynamic marking below.

BASSOON

Very crisp ($\text{♩} = 84$)

Measures 1-18 of the bassoon part. The key signature is one sharp (F#) and the time signature is 2/2. The music is marked *f* (forte). Red brackets highlight specific passages: measures 4-5, 6-7, and 17-18. Measure numbers 5, 10, and 16 are indicated below the staff.

$\text{♩} = 70$

Measures 64-72 of the bassoon part. The key signature changes to two flats (Bb, Eb) and the time signature is common time (C). The music is marked *espres.* (expressive). Red brackets highlight measures 64-65 and 68-69. Measure number 64 is indicated below the staff.

CLARINET

Very crisp ($\text{♩} = 84$)

Measures 17-21 of the Clarinet part. The key signature is two sharps (F# and C#), and the time signature is 2/2. Measure 17 starts with a red bracket and a *p* dynamic. Measures 18-20 show a crescendo from *p* to *f*, with *cresc.* and *mf* markings. Measure 21 starts with a red bracket and a *ff* dynamic. The music consists of eighth and sixteenth notes, mostly beamed together.

$\text{♩} = 70$

A short musical phrase for the Clarinet, marked "Solo". It begins with a red bracket and a *p* dynamic. The key signature is two sharps (F# and C#), and the time signature is 2/2. The phrase consists of a few measures of eighth and sixteenth notes.

Measures 25-29 of the Clarinet part. Measure 25 is marked with a circled 25. The music features a long, sweeping melodic line with many accidentals, primarily eighth and sixteenth notes. A red bracket is present at the end of the phrase in measure 29. The key signature is two sharps (F# and C#), and the time signature is 2/2.

BASS CLARINET

Very crisp ($\text{♩} = 84$)

15 16 17 18 19 20

f *mp* *ff*

$\text{♩} = 70$

63 64 65 66 67 68

espr. *mp* *ff* *mp* *ff*

ALTO SAXOPHONE

Very crisp ($\text{♩} = 84$)



$\text{♩} = 70$



TENOR SAXOPHONE

Very crisp ($\text{♩} = 84$)



BARITONE SAXOPHONE

Very crisp ($\text{♩} = 84$)

16

f

19

mp *ff*

21

23

Detailed description: This block contains three staves of music in treble clef with a key signature of three sharps (F#, C#, G#) and a 2/2 time signature. The first staff starts at measure 16 with a red bracket highlighting a measure rest followed by a quarter note G#4, a quarter note F#4, and a half note E4. The second staff starts at measure 19 with a crescendo hairpin leading from *mp* to *ff*. It features a series of eighth notes and a circled measure number 21. The third staff starts at measure 23 with a red bracket highlighting a measure rest followed by a quarter note G#4, a quarter note F#4, and a half note E4. The music is marked 'Very crisp' with a tempo of 84 quarter notes per minute.

$\text{♩} = 70$

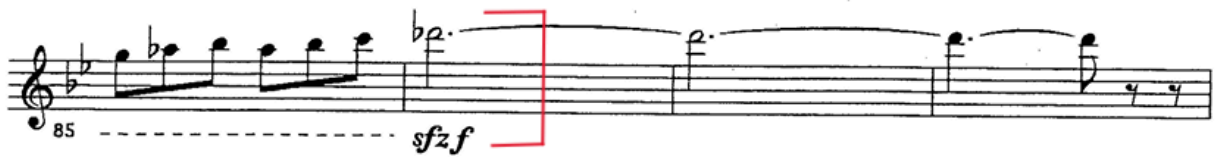
75

ff

Detailed description: This block contains two staves of music in treble clef with a key signature of one flat (Bb) and a common time (C) signature. The first staff starts with a tempo marking of 70 quarter notes per minute and a red bracket highlighting a measure rest followed by a quarter note Bb4, a quarter note A4, and a half note G4. The second staff starts at measure 75 with a red bracket highlighting a measure rest followed by a quarter note Bb4, a quarter note A4, and a half note G4. The music is marked *ff*.

TRUMPET


$\text{♩} = 138$




$\text{♩} = 70$



HORN

 = 138



 = 70



TROMBONE

♪ = 138

240

ff

The musical score for the bass line of 'The Rose Tree' is shown. It begins at measure 240 with a bass clef and a key signature of two flats (B-flat and E-flat). The melody starts with a half note G2, followed by a half note F2, and then a quarter rest. A red bracket highlights the first measure of the next phrase, which begins with a fortissimo (*ff*) dynamic. This phrase consists of a quarter note G2, a quarter note F2, a quarter note E2, a quarter note D2, a quarter note C2, and a quarter note B1.

245 *rit. poco a poco* -----

250

rit. molto

EUPHONIUM

♩ = 138

224

pp

mf

229

f

234

This musical score for Euphonium covers measures 224 to 234. It is written in bass clef with a key signature of three flats (B-flat, E-flat, A-flat). The time signature changes from 4/4 to 2/4 at measure 228. The dynamics are *pp* (pianissimo) at measure 228, *mf* (mezzo-forte) at measure 230, and *f* (forte) at measure 232. Red brackets highlight the first measure of the 2/4 section (measure 228) and the final measure (measure 234).

♩ = 70

75

Soli

espr. ff

79

p

This musical score for Euphonium covers measures 75 to 79. It is written in bass clef with a key signature of three flats (B-flat, E-flat, A-flat) and a common time signature (C). The dynamics are *espr. ff* (espressivo fortissimo) at measure 75 and *p* (piano) at measure 79. A *Soli* instruction is placed above measure 75. Measure 79 features a triplet of eighth notes. Red brackets highlight measure 75 and measure 79.

TUBA

$\text{♩} = 138$

64

65

ff *ben marcato*

simile

74

sfz

Detailed description: This block contains three staves of music for the Tuba part, measures 64 through 74. The key signature has three flats (B-flat, E-flat, A-flat) and the time signature is 6/8. Measure 64 starts with a bass clef and a 6/8 time signature. A red bracket highlights measures 64 and 65. Measure 65 begins with a forte fortissimo (**ff**) dynamic and the instruction *ben marcato*. Measures 66 through 73 continue with various rhythmic patterns, including eighth and sixteenth notes, and rests. Measure 74 ends with a sforzando (**sfz**) dynamic. The word *simile* appears below measure 73. Red brackets are used to highlight specific measures: measures 64-65, measures 66-73, and measure 74.

$\text{♩} = 70$

Soli

75

ff

Detailed description: This block contains two staves of music for the Tuba part, measures 75 through 80. The key signature has three flats (B-flat, E-flat, A-flat) and the time signature is common time (C). Measure 75 begins with a *Soli* instruction. A red bracket highlights measures 75 and 76. Measure 76 begins with a forte fortissimo (**ff**) dynamic. Measures 77 through 80 continue with various rhythmic patterns, including eighth and sixteenth notes, and rests. A circled measure number 75 is placed above measure 76. Red brackets are used to highlight specific measures: measures 75-76 and measures 77-80.

PERCUSSION

MALLETS: ♩. = 138

294

XYLOPHONE

ff

8va

8va

tr

Detailed description: This block contains two staves of music. The top staff is for Mallets, starting at measure 294, featuring a melodic line with eighth and sixteenth notes, ending with a trill (tr). The bottom staff is for Xylophone, starting at measure 294, featuring a melodic line with eighth and sixteenth notes, marked with a forte (ff) dynamic. Red brackets highlight specific passages in both staves. The Xylophone staff has two '8va' markings indicating octave transposition.

SNARE ♩. = 138

128

SNARE DRM

ff

131

134

Detailed description: This block contains three staves of music for Snare. The first staff starts at measure 128, marked with a forte (ff) dynamic and labeled 'SNARE DRM'. The second staff starts at measure 131. The third staff starts at measure 134. Red brackets highlight specific passages in the first and third staves.

TIMPANI: ♩. = 138

57

6

SOLO

ff ben marcato

67

72

db-e_b

Detailed description: This block contains three staves of music for Timpani. The first staff starts at measure 57, marked with a forte (ff) dynamic. The second staff starts at measure 67, marked with a forte (ff) dynamic and labeled 'SOLO' and 'ben marcato'. The third staff starts at measure 72, marked with a forte (ff) dynamic and labeled 'db-e_b'. Red brackets highlight specific passages in the first, second, and third staves.